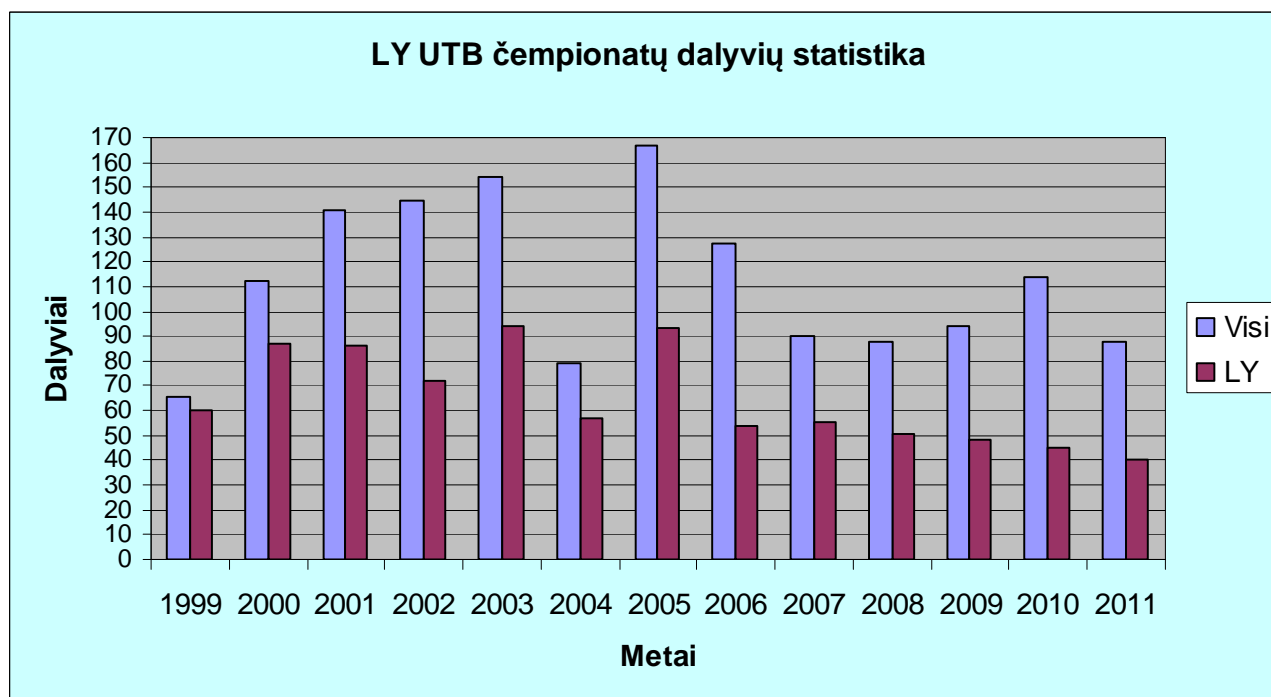


LY VUSHF Championship 2011 results



Results:

Place	Call	WWL	QSO	Score	Mode	Band
Single Operator section						
1.	LY3UE	KO24OP	48	17892	MIX	144 432
2.	LY2R	KO15VS	51	16394	MIX	144 432 1.3G
3.	LY2BUU	KO15XH	45	8676	MIX	144 432 1.3G
4.	LY2KX	KO15PU	43	7702	PHONE	144 432
5.	LY2NA	KO15JC	24	4596	MIX	144
6.	LY2CK	KO24AJ	19	1761	PHONE(FM)	144 432
7.	LY3TR	KO14MW	21	1482	PHONE(FM)	144 432
8.	LY2BCE	KO25DR	15	1399	MIX	144 432
9.	LY1MM	KO15XG	21	1385	MIX	144
10.	LY1T	KO15DF	17	1382	PHONE	144 432
11.	LY3BBM	KO15XG	19	1371	PHONE(FM)	144
12.	LY3PEJ	KO15CL	16	1370	PHONE(FM)	144 432
13.	LY2HQ	KO15OV	19	1362	PHONE(FM)	144 432
14.	LY3DT/P	KO15EH	17	1319	PHONE(FM)	144 432
15.	LY1CR	KO15CL	13	1244	MIX	144
16.	LY3BRA	KO14WU	17	1051	PHONE(FM)	144 432
17.	LY1R	KO14RV	10	479	PHONE	144
18.	LY2OM	KO15XG	7	346	PHONE(FM)	144
19.	LY3BBI	KO24OR	5	129	PHONE	144
20.	LY3OO	KO14NU	3	107	PHONE	144 432
21.	LY2BDI	KO24OQ	5	31	PHONE	144

Multi Operator section						
1.	LY2VA	KO14XV	33	12207	MIX	144 432 1.3G
2.	LY3V/P	KO05LH	33	9507	MIX	144 432 1.3G
3.	LY3UV/P	KO06MA	10	972	PHONE(FM)	144 432

Other countries

1.	YL2AO	KO16DK	41	17151	MIX	144 432 1.3G
2.	SP2QBQ	JO94BF	35	15163	MIX	144
3.	SP2WPY	JO94FL	25	14752	MIX	144 432 1.3G
4.	YL2AJ	KO16OX	39	14080	MIX	144 432 1.3G
5.	YL2OK	KO37AS	40	13334	MIX	144 432
6.	DL3BQA	JO73CF	22	10977	MIX	144 432
7.	ES2MC	KO29GG	22	10821	MIX	144 432
8.	SP2HPD	JO94JC	25	9894	MIX	144 432
9.	YL2FZ	KO37QI	26	9536	MIX	144 432 1.3G
10.	EW1AA	KO33RU	19	9339	MIX	144 432 1.3G
11.	EU4CK	KO23IO	26	7974	MIX	144 432
12.	YL3HA	KO26DW	29	7596	PHONE	144 432
13.	YL2GD	KO37ML	20	7293	CW	144 432 1.3G
14.	US5WU	KO20DI	14	6401	MIX	144 432
15.	ES2DF	KO29GG	18	5210	MIX	144 432
16.	YL2GP	KO27AA	25	5048	MIX	144
17.	EU4AG	KO13VQ	16	4700	MIX	144 432
18.	YL2PJ	KO36QM	18	4629	MIX	144 432
19.	ES8TJM	KO18UM	16	4257	PHONE	144
20.	YL3GEA	KO37QM	19	4126	PHONE	144 432
21.	SP2DDV	JO83VE	9	3498	MIX	144 432
22.	UT4WT	KO20EC	7	2349	MIX	144
23.	ES1II/8	KO18UM	10	2181	PHONE	144
24.	RA3LW	KO54MQ	8	2118	MIX	144
25.	EW1CD/2	KO34RC	8	2040	PHONE	144
26.	EW6DX	KO45JL	8	2015	CW	144
27.	EW6BA	KO55BD	6	1981	MIX	144
28.	RW3XR	KO73EU	4	1799	CW	144
29.	RA2FB	KO05WB	17	1737	PHONE	144 432
30.	ES1AO	KO29HI	5	740	MIX	144 432
31.	ES6TX	KO37KW	3	677	PHONE	144
32.	SP4SKN/2	JO94EI	5	522	PHONE	144

Check logs, tnx,

Call	WWL
DH8BQA	JO73CE
EW1WA	KO33SU
HA6VV/P	JN97WV
LY1CT	KO05OQ
LY1KL	KO24OQ
LY1MY	KO24OQ
LY4LA	KO05NR
RA1TBH	KO58PN
RU2FM	KO04GQ
SM3BEI	JP81NG
UT5DV	KN18DO

No logs, sorry:

ES1AEW/2, ES5QA, ES6DO, EU1AI, HA6IGM, HA8BR, YL2HC, YL3DW, YL3GCD, LY1CE, LY1CO, LY1GP, LY1LK, LY1U, LY2SH, LY2VO, LY3ID, LY3SR, LY4Q, LY4S, LY4TB, LY4VA, OK2BFH, RA1WK, RA2FGG, SP4TKR, SQ2EEN, UA1ASA/1, UR5WCE.